

It is Saturday, August 15, 2009 and a beautiful day in the great state of Tennessee. Because it's such a great day, you decide to take out your wheel fairing-less Piper PA-28 for a VFR cross country around the area. After making some phone calls, you decide to take your friend Erika, fly from your home airport of Memphis Dewitt-Spain (M01,) located at N35°12.04 W90°03.24, go pick up your other friend George at the Arkansas International Airport in Blytheville (KBYH,) located at N35°57.86 W89°56.64, head over to Camden, TN (OM4,) located at N36°00.57 W88°07.48 for a catfish dinner by the lake, and then go back the way you came to get everyone home. Your information is as follows:

**Aircraft Records:**

Annual Inspection: 07/21/2009  
 ELT Inspection: 07/21/2009  
 Transponder Inspection: 07/21/2009  
 Pitot-Static Inspection: 07/21/2009

**Weight and Balance Information:**

Basic Empty Weight: 1541 pounds, moment 134835  
 Front Seats Arm: 80.5 inches aft of datum  
 Rear Seats Arm: 118.1 inches aft of datum  
 Fuel (48 gallons): 95.0 inches aft of datum

**Personal Records:**

Date of birth: 06/03/1965  
 Private Pilot Certificate: 06/11/2005  
 Instrument Rating: 08/18/2007  
 Class III Medical: 06/05/2005 (weight 160 pounds.)  
 Logbook as below:

Date	Hours	ASEL	AMEL	Day/Night	Landings	Remarks
7/09/2009	2.2	1.2		Day	2	Trip to LIT
8/01/2009	1.4	1.4		Night	2	Trip to DYR
8/04/2009	1.3	1.3		Day	11	Landing Practice at M01

**Passenger Information:**

Erika: Weight 145 pounds, will sit in front.  
 George: Weight 155 pounds, will sit in back.  
 Baggage: None.

**Performance Instructions:**

1. For operations at M01, use METAR information for KAWM and TAF information for KMEM.
2. For operations at KBYH, use METAR information for KHKA.
3. For operations at OM4, use METAR and TAF information for KMKL.
4. Use winds and temperatures aloft at MEM for all legs, interpolate as necessary for your cruise altitude.
5. For climb information, use performance charts provided, assume wind will have negligible effect on your climb distance.
6. For descent, assume 800 feet per minute, use cruise TAS, winds aloft at 3000 feet, 70% of your cruise fuel flow and destination temperature.
7. Use economy cruise at 65% power for all cruise calculations, unless otherwise instructed. Use best economy fuel flow.
8. Use the altimeter setting of the departure airport to calculate pressure altitude for takeoff, climb and cruise. Use the altimeter setting for the arrival airport to calculate pressure altitude for descent and landing.

**Weather and NOTAMs:**

\*\*\*\*\* Departure Closest Terminal Weather \*\*\*\*\*

METAR KAWM 152053Z AUTO 18005KT 10SM CLR 33/21 A2998 RMK AO2 SLP147  
T03330211 58018

TAF is not available, refer to the Area Forecast

!MKL 08/017 M01 OBST TOWER 528 (269 AGL) 3.73 SSE LGTS OTS (ASR  
1051806) TIL 0908190308

\*\*\*\*\* Destination Closest Terminal Weather \*\*\*\*\*

METAR KHKA 152053Z AUTO 12004KT 5SM HZ BKN045 32/22 A3000 RMK AO2  
SLP156 T03220217 58019

METAR KMKL 152053Z 00000KT 10SM FEW048 33/22 A3002 RMK AO2 SLP161  
T03280222 58018

TAF is not available, refer to the Area Forecast

!MKL 05/107 0M4 RWY 4 AER WINDSOCK NOT VISIBLE

\*\*\*\*\* FA Synopsis and VFR Clouds/Weather \*\*\*\*\*

DFWC FA 151845

SYNOPSIS AND VFR CLDS/WX

SYNOPSIS VALID UNTIL 161300

CLDS/WX VALID UNTIL 160700...OTLK VALID 160700-161300

OK TX AR TN LA MS AL

.

SEE AIRMET SIERRA FOR IFR CONDS AND MTN OBSCN.

TS IMPLY SEV OR GTR TURB SEV ICE LLWS AND IFR CONDS.

NON MSL HGTS DENOTED BY AGL OR CIG.

.

SYNOPSIS...TROF OVR SWRN KS-OK/TX PNHDLS-SWRN TX BY 13Z OVR S  
CNTRL KS-NWRN OK-TX PNHDL-SWRN TX. TROF OVR NERN GLFMEX BY 13Z  
OVR N CNTRL GLFMEX. TROF OVR CNTRL GA-CNTRL AL-CNTRL MS WL WKN BY  
00Z. BY 13Z CDFNT WL MOV OVR SWRN KS-WRN OK/TX PNHDLS.

.

AR

SCT-BKN050 TOP 120. ERN PTN ISOL TSRA. CB TOP FL420. BECMG 0103  
SCT CI OCNL SCT050. OTLK...VFR 10Z MVFR BR.

.

TN

SCT-BKN050 TOP 140. ISOL TSRA. CB TOP FL420. 02Z SKC. ERN OCNL  
SCT100. OTLK...VFR 09Z MVFR BR 10Z ERN IFR CIG BR.

.

MS AL

NRN-CNTRL PTN...SCT-BKN050 TOP 140. WDLY SCT TSRA. CB TOP FL450.  
BECMG 0103 SCT035 SCT CI. OTLK...VFR 08Z MVFR BR 10Z ERN MS-AL  
IFR CIG BR.

SRN PTN...SCT-BKN025 BKN040 TOP 160. SCT TSRA. CB TOP FL450.  
BECMG 0103 SCT025 SCT150 SCT-BKN CI. CSTLN ISOL TSRA. CB TOP  
FL400. OTLK...VFR CSTLN TSRA 08Z MVFR BR 12Z CSTLN MVFR CIG TSRA.

\*\*\*\*\* Surface Observations \*\*\*\*\*

METAR KOLV 152050Z 16005KT 10SM SCT050 32/22 A3001  
METAR KMEM 152053Z 19011KT 10SM FEW050 34/21 A3000 RMK AO2 SLP152  
T03390206 58018 \$  
METAR KAWM 152053Z AUTO 18005KT 10SM CLR 33/21 A2998 RMK AO2 SLP147  
T03330211 58018  
METAR KNQA 152055Z COR 14007KT 10SM SCT050 33/23 A3000 RMK  
no reports available for BYH  
METAR KHKA 152053Z AUTO 12004KT 5SM HZ BKN045 32/22 A3000 RMK AO2  
SLP156 T03220217 58019  
METAR KDYR 152055Z AUTO 19004KT 10SM CLR 33/22 A3001 RMK AO1 57017  
METAR KDYR 152115Z AUTO 16003KT 10SM CLR 32/21 A3001 RMK AO1  
METAR KMKL 152053Z 00000KT 10SM FEW048 33/22 A3002 RMK AO2 SLP161  
T03280222 58018  
no reports available for XUO  
no reports available for M52  
no reports available for 0M1

\*\*\*\*\* Pilot Reports \*\*\*\*\*

DYR UA /OV 5M9/TM 2028/FL048/TP SF34/TB MOD TURB 110-048/RM ZME

\*\*\*\*\* Radar Summaries \*\*\*\*\*

NQA 2035 CELL TRWX 113/78 D3  
AREA 4RW++ 32/92 51/62 10W  
AREA 3RW++ 240/31 210/123 29W  
AREA 6RW++ 99/66 126/87 16W MT 310 211/123  
AREA 6RW++ 317/62 291/53 14W  
AREA 5RW+ 183/114 168/119 20W  
AUTO  
^IN43 KK4 LK2 MK2 MP45 NL3 NQ4 OL4 PL44 QL4 RL3 RN333

\*\*\*\*\* Terminal Forecasts \*\*\*\*\*

TAF KMEM 151730Z 1518/1618 15007KT P6SM FEW080  
FM152000 18006KT P6SM SCT050  
FM160300 16006KT P6SM SKC  
FM161300 16007KT P6SM SCT045  
TAF KMKL 151730Z 1518/1618 VRB04KT P6SM SKC  
FM152000 16005KT P6SM SCT050  
FM160300 17004KT P6SM SKC TEMPO 1609/1612 3SM BR SKC  
FM161400 17006KT P6SM BKN045

\*\*\*\*\* FD Winds Aloft Forecast \*\*\*\*\*

DATA BASED ON 151800Z  
REQUESTED  
VALID 160000Z FOR USE 2000-0300Z. TEMPS NEG ABV 24000  
FT 3000 6000 9000 12000 18000 24000 30000 34000 39000  
MEM 1512 1613+17 1713+11 1914+04 2709-05 0209-17 342633 013243 023854  
CGI 1714 1819+16 2024+09 2017+04 2806-05 3215-17 332333 013142 354154  
HSV 1112 1214+16 1417+10 1208+05 9900-06 2407-19 362334 341243 260752  
BNA 1310 1311+16 1322+10 1514+04 2710-07 2714-19 333335 353044 351152

\*\*\*\*\* Runway NOTAMs \*\*\*\*\*

!MKL 01/172 MKL RWY 20 REIL OTS  
!MKL 05/107 0M4 RWY 4 AER WINDSOCK NOT VISIBLE

\*\*\*\*\* Obstruction NOTAMs \*\*\*\*\*

!MKL 08/017 M01 OBST TOWER 528 (269 AGL) 3.73 SSE LGTS OTS (ASR  
1051806) TIL 0908190308  
!MKL 08/082 MKL OBST TOWER 723 (333 AGL) 5.74 E LGTS OTS (ASR 1038043) TIL  
0908271354

\*\*\*\*\* Communication NOTAMs \*\*\*\*\*

!DYR 08/005 DYR COM RCO 121.5/122.2/122.45/243.0/255.4 OTS  
!MKL 06/144 MKL COM RTR 249.950 CMSND

\*\*\*\*\* Airspace NOTAMs \*\*\*\*\*

FDC 9/4683 ZDV PART 1 OF 4 FLIGHT RESTRICTIONS JACKSON, TENNESSEE, AUGUST 15,  
2009 LOCAL. PURSUANT TO 49 USC 40103(B), THE FEDERAL AVIATION ADMINISTRATION  
(FAA) CLASSIFIES THE AIRSPACE DEFINED IN THIS NOTAM AS 'NATIONAL DEFENSE  
AIRSPACE'. PILOTS WHO DO NOT ADHERE TO THE FOLLOWING PROCEDURES MAY BE  
INTERCEPTED, DETAINED AND INTERVIEWED BY LAW ENFORCEMENT/SECURITY PERSONNEL.  
ANY OF THE FOLLOWING ADDITIONAL ACTIONS MAY ALSO BE TAKEN AGAINST A PILOT WHO  
DOES NOT COMPLY WITH THE REQUIREMENTS OR ANY SPECIAL INSTRUCTIONS OR  
PROCEDURES ANNOUNCED IN THIS NOTAM: A) THE FAA MAY TAKE ADMINISTRATIVE  
ACTION, INCLUDING IMPOSING CIVIL PENALTIES AND THE SUSPENSION OR REVOCATION  
OF AIRMEN CERTIFICATES; OR B) THE UNITED STATES GOVERNMENT MAY PURSUE  
CRIMINAL CHARGES, INCLUDING CHARGES UNDER TITLE 49 OF THE UNITED STATES CODE,  
SECTION 46307; OR C) THE UNITED STATES GOVERNMENT MAY USE DEADLY FORCE  
AGAINST THE AIRBORNE AIRCRAFT, IF IT IS DETERMINED THAT THE AIRCRAFT POSES AN  
IMMINENT SECURITY THREAT. PURSUANT TO TITLE 14, SECTION 91.141 OF THE CODE OF  
FEDERAL REGULATIONS, AIRCRAFT FLIGHT OPERATIONS ARE PROHIBITED WITHIN A 30  
NMR OF 390531N/1083020W OR THE JNC067013.5 UP TO NOT INCLUDING 18000 FT MSL  
EFFECTIVE 0908152045 UTC (1545 LOCAL 08/15/09) UNTIL 0908160035 UTC (1935  
LOCAL 08/15/09). WITHIN A 11 NMR OF 353730N/880247W OR THE JKS082015.5 UP TO  
BUT NOT INCLUDING 18000 FT MSL EFFECTIVE 0908152045 UTC (1545 LOCAL 08/15/09)  
UNTIL 0908160035 UTC (1935 LOCAL 08/15/09). EXCEPT AS SPECIFIED BELOW AND/OR  
UNLESS AUTHORIZED BY ATC IN CONSULTATION WITH THE AIR TRAFFIC SECURITY  
COORDINATOR VIA THE DOMESTIC EVENTS NETWORK (BNA): A. ALL AIRCRAFT OPERATIONS  
WITHIN THE 11 NMR AREA(S) LISTED ABOVE, KNOWN AS THE INNER CORE(S), ARE  
PROHIBITED EXCEPT FOR: APPROVED LAW ENFORCEMENT, MILITARY AIRCRAFT DIRECTLY  
SUPPORTING THE UNITED STATES SECRET SERVICE (USSS) AND THE OFFICE OF THE  
PRESIDENT OF THE UNITED STATES, APPROVED AIR AMBULANCE FLIGHTS, AND REGULARLY  
SCHEDULED COMMERCIAL PASSENGER AND ALL-CARGO CARRIERS OPERATING UNDER ONE OF  
THE FOLLOWING TSA-APPROVED STANDARD SECURITY PROGRAMS/PROCEDURES: AIRCRAFT  
OPERATOR STANDARD SECURITY PROGRAM (AOSSP), FULL ALL-CARGO AIRCRAFT OPERATOR  
STANDARD SECURITY PROGRAM (FACAOSSP), MODEL SECURITY PROGRAM (MSP), TWELVE  
FIVE STANDARD SECURITY PROGRAM (TFSSP) ALL CARGO, OR ALL-CARGO INTERNATIONAL  
SECURITY PROCEDURE (ACISP) AND ARE ARRIVING INTO AND/OR DEPARTING FROM 14 CFR  
PART 139 AIRPORTS. ALL EMERGENCY/LIFE SAVING FLIGHT (MEDICAL/LAW  
ENFORCEMENT/FIREFIGHTING) OPERATIONS MUST COORDINATE WITH ATC PRIOR TO THEIR  
DEPARTURE AT 615-342-1590 TO AVOID POTENTIAL DELAYS. B. FOR OPERATIONS WITHIN  
THE AIRSPACE BETWEEN THE 11 NMR AND 30 NMR AREA(S) LISTED ABOVE, KNOWN AS THE  
OUTER RING(S): ALL AIRCRAFT OPERATING WITHIN THE OUTER RING(S) LISTED ABOVE  
ARE LIMITED TO AIRCRAFT ARRIVING OR DEPARTING LOCAL AIRFIELDS, AND WORKLOAD  
PERMITTING, ATC MAY AUTHORIZE TRANSIT OPERATIONS. AIRCRAFT MAY NOT LOITER.  
ALL AIRCRAFT MUST BE ON AN ACTIVE IFR OR VFR FLIGHT PLAN WITH A DISCRETE CODE  
ASSIGNED BY AN AIR TRAFFIC CONTROL (ATC) FACILITY. AIRCRAFT MUST BE SQUAWKING  
THE DISCRETE CODE PRIOR TO DEPARTURE AND AT ALL TIMES WHILE IN THE TFR AND  
MUST REMAIN IN TWO-WAY RADIO COMMUNICATIONS WITH ATC.

## BLYTHEVILLE

**ARKANSAS INTL** (BYH) 3 NW UTC-6(-5DT) N35°57.86' W89°56.64'

254 B S5 FUEL 100LL, JET A NOTAM FILE BYH

**RWY 18-36:** H11602X150 (CONC) S-155, D-235, DT-455 HIRL (NSTD)

**RWY 18:** ALSF1. VASI(V4L)—GA 3.0° TCH 54'.

**RWY 36:** SALS. VASI(V4L)—GA 3.0° TCH 51'.

**AIRPORT REMARKS:** Attended Mon-Fri 1400-2300Z±. Arpt unattended holidays. For svc after hrs call 870-780-6455, no fee charged. Rwy 18 ALSF1 OTS indef. Rwy 36 SALS OTS indef. Rwy 18-36 NSTD HIRL located 85' from rwy edge and NSTD distance from centerline. Depth perception problems may exist during periods of darkness. ACTIVATE HIRL Rwy 18-36—CTAF.

**COMMUNICATIONS:** CTAF/UNICOM 122.7

**MEMPHIS CENTER APP/DEP CON** 134.65

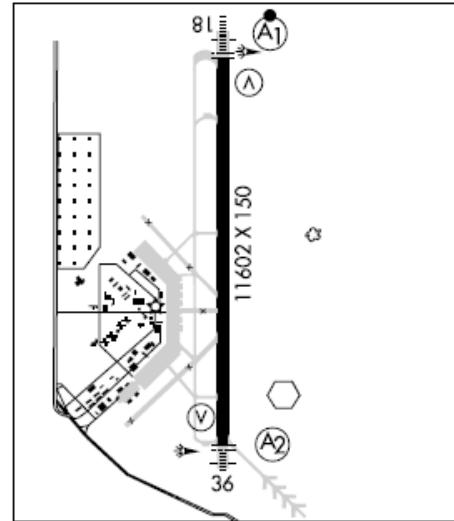
**RADIO AIDS TO NAVIGATION:** NOTAM FILR DYR.

**DYERSBURG (L) VORTACW** 116.8 DYR Chan 115 N36°01.11' W89°19.06' 261° 30.7 NM to fld. 380/3E. HIWAS.

**GOSNELL (L) VORW** 111.8 GOJ N35°57.06' W89°56.47' at fld. NOTAM FILE BYH.

**ILS/DME** 110.3 I-BYH Chan 40 Rwy 18.

**MEMPHIS**  
H-6J, L-16H  
IAP



## CAMDEN

**BENTON CO** (ØM4) 3 S UTC-6(-5DT) N36°00.57' W88°07.48'

468 B S4 FUEL 100LL, JET A NOTAM FILE MKL

**RWY 04-22:** H5001X75 (ASPH) S-30 MIRL

**RWY 04:** REIL. PAPI(P2R). Trees.

**RWY 22:** REIL. PAPI(P2L). Trees.

**AIRPORT REMARKS:** Attended 1300-2300Z±. Arpt unattended Thanksgiving, Christmas and New Year's Day. For arpt attendant after hrs call 731-584-3609/5187. Rwy 04 REIL OTS indef.

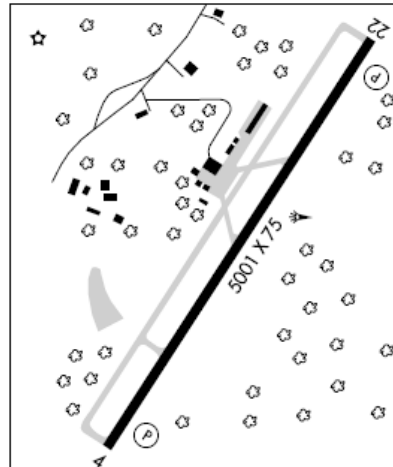
**COMMUNICATIONS:** CTAF/UNICOM 122.8

Ⓜ **MEMPHIS CENTER APP/DEP CON** 125.85

**RADIO AIDS TO NAVIGATION:** NOTAM FILE MKL.

**JACKS CREEK (L) VOR/DME** 109.4 JKS Chan 31 N35°35.94' W88°21.53' 023° 27.2 NM to fld. 630/02E.

**ST LOUIS**  
H-6J, L-16I  
IAP



## JACKSON

Mc KELLAR-SIPES RGNL (MKL) 4 W UTC-6(-5DT) N35°35.99' W88°54.94'

MEMPHIS

434 B S4 FUEL 100LL, JET A Class I, ARFF Index A NOTAM FILE MKL

H-6J, L-16H

RWY 02-20: H6006X150 (ASPH-GRVD) S-55, D-80, ST-102, DT-125 HIRL 0.4% up S

IAP, AD

RWY 02: MALSR. PAPI(P4L).

RWY 20: REIL. PAPI(P4L). Tree.

RWY 11-29: H3538X100 (ASPH) S-27 MIRL

RWY 11: PAPI(P4L). Tree. RWY 29: PAPI(P4L). Tree.

AIRPORT REMARKS: Attended Mon-Fri 1200-0330Z†, Sat-Sun

1300-0230Z†. For attendant other hrs call 731-422-4486/394-6006. CLOSED to Department of Transportation certificated air carrier operations 0400-1330Z† except with prior approval from arpt management. CLOSED to unscheduled air carrier ops with more than 30 passenger seats except 24 hr PPR call arpt manager 731-423-0995. Air carrier operations involving aircraft with more than 9 passenger seats are not authorized in excess of 15 minutes before or after scheduled arrival or departure time without prior coordination with airport manager and confirmation that aircraft rescue and fire fighting services are available prior to arrival or departure. PPR for ground access to fld 0330-1200Z†, call 731-423-0995. Rwy 02-20 grooved 55' each side of centerline. Rwy 02 PAPI not coincidental with I-MLK Glideslope path. When twr closed ACTIVATE HIRL Rwy 02-20, MIRL Rwy 11-29 and MALSR Rwy 02-CTAF.

WEATHER DATA SOURCES: ASOS 119.325 (731) 424-0692.

COMMUNICATIONS: CTAF 127.15 UNICOM 122.95

JACKSON RCO 122.2 122.65 127.15 (JACKSON RADIO)

Ⓡ MEMPHIS CENTER APP/DEP CON 134.65

JACKSON TOWER 127.15 (1300-0100Z†) GND CON 120.9

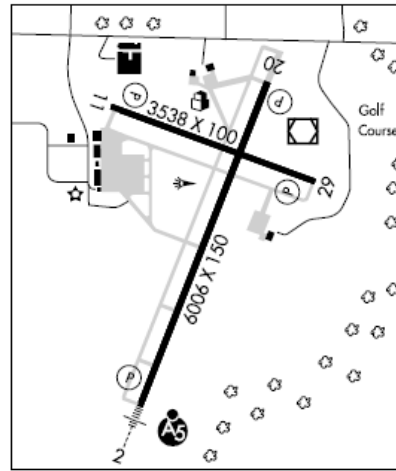
AIRSPACE: CLASS D svc 1300-0100Z† other times CLASS E.

RADIO AIDS TO NAVIGATION: NOTAM FILE MKL.

(T) VORW/DME 112.0 MKL Chan 57 N35°36.21' W88°54.63' at fld. 410/01W.

MERSY NDB (LOM) 394 MK N35°30.95' W88°57.42' 023° 5.4 NM to fld.

ILS 109.1 I-MKL Rwy 02. LOM MERSY NDB.



## MEMPHIS

GENERAL DEWITT SPAIN (MØ1) 6 NW UTC-6(-5DT) N35°12.04' W90°03.24'

MEMPHIS

225 B S4 FUEL 100LL, JET A+ OX1 NOTAM FILE MKL

L-16H

RWY 17-35: H3800X75 (ASPH) S-25 MIRL

IAP

RWY 17: REIL. VASI(V2L)—GA 4.0° TCH 31'. Trees. Rgt tfc.

RWY 35: REIL. PAPI(P2L)—GA 4.0° TCH 40'. Tree.

AIRPORT REMARKS: Attended 1400-2230Z†. Arpt unattended Thanksgiving and Christmas. Numerous radio towers 1 mile NE of airport—849' MSL (608' AGL). Fixed-wing tkf/lbg prohibited from/to grass areas.

COMMUNICATIONS: CTAF/UNICOM 122.7

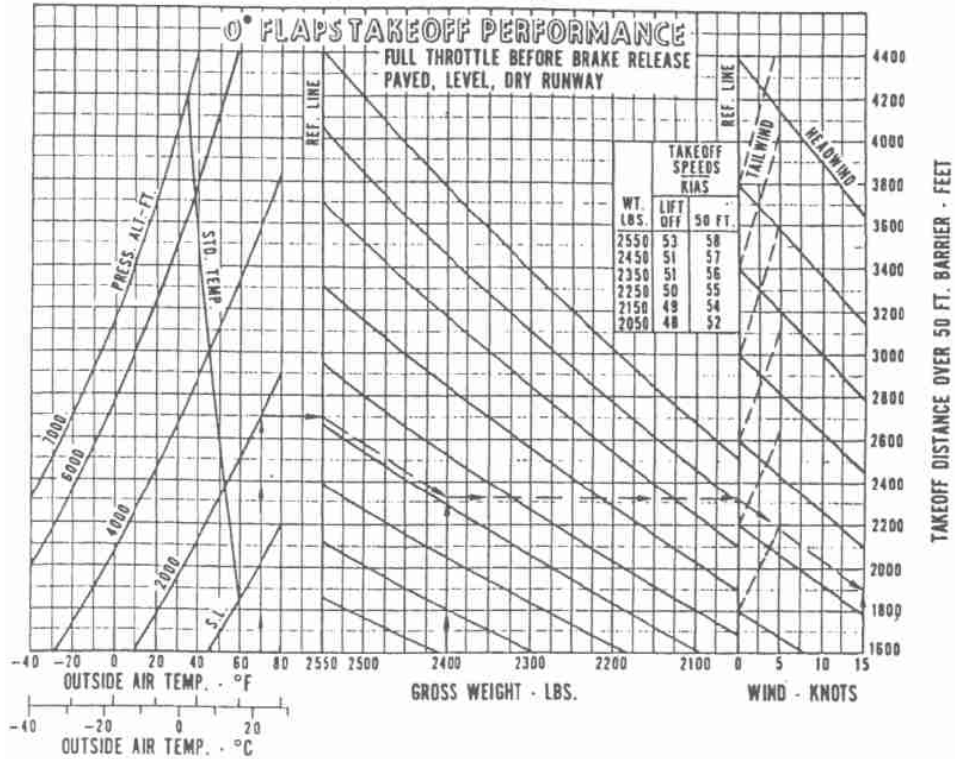
Ⓡ MEMPHIS APP CON 119.1 Ⓡ MEMPHIS DEP CON 124.65

RADIO AIDS TO NAVIGATION: NOTAM FILE MEM.

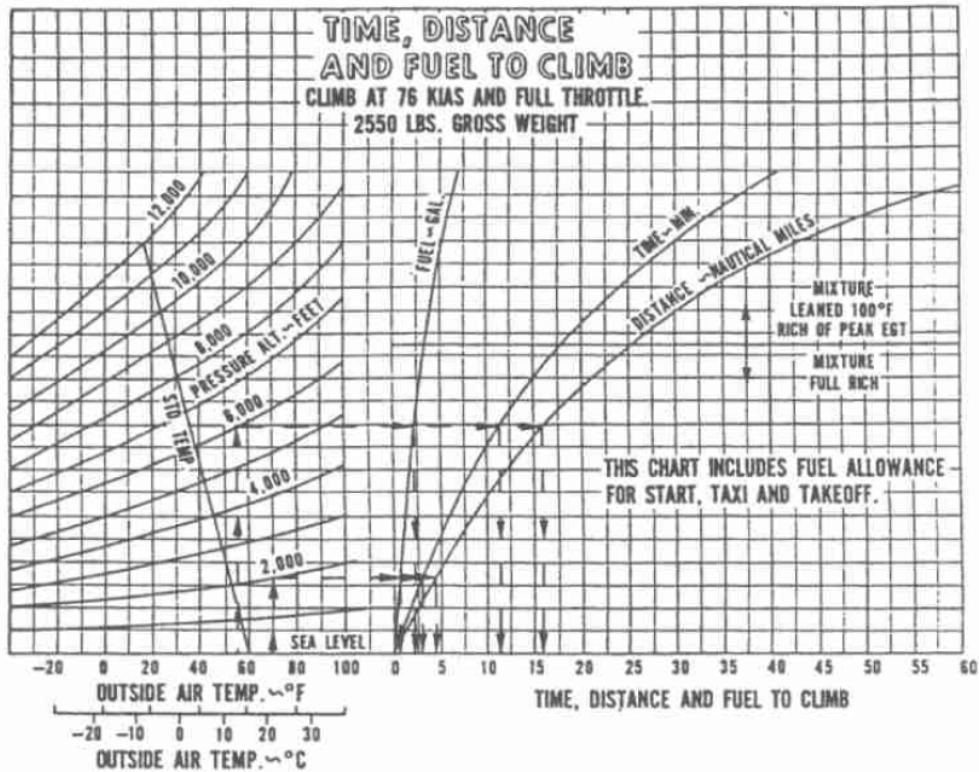
MEMPHIS (H) VORTAC 117.5 MEM Chan 122 N35°00.91' W89°58.99' 342° 11.7 NM to fld. 360/01E.

SPAIN NDB (MHW) 414 SPQ N35°12.07' W90°03.07' at fld. NOTAM FILE MKL. VFR only.

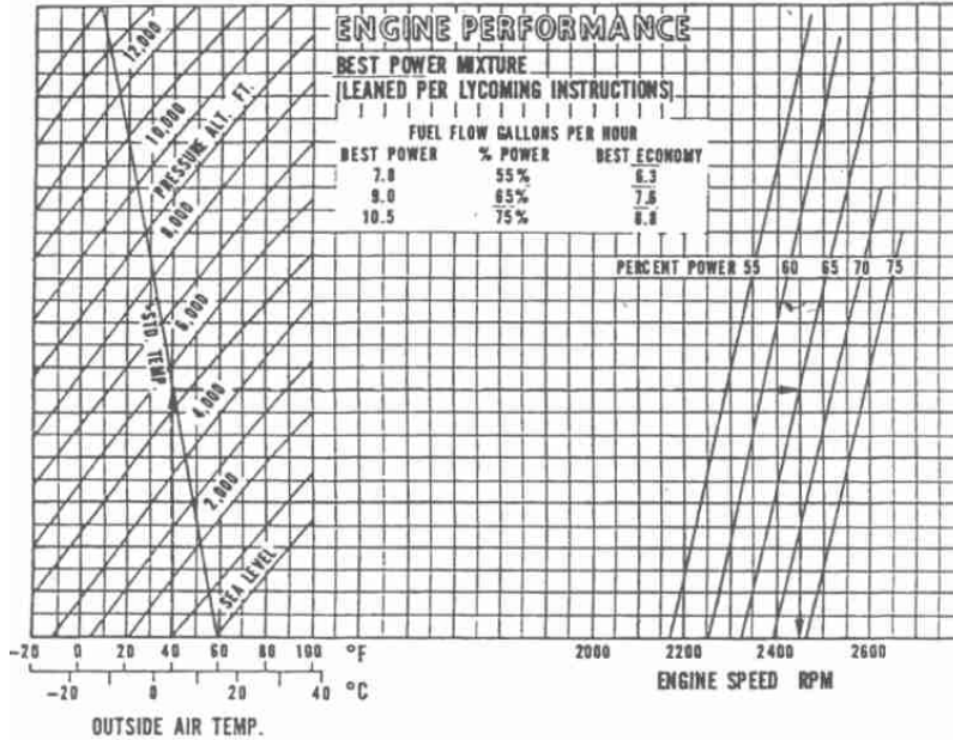
# PA-28-181



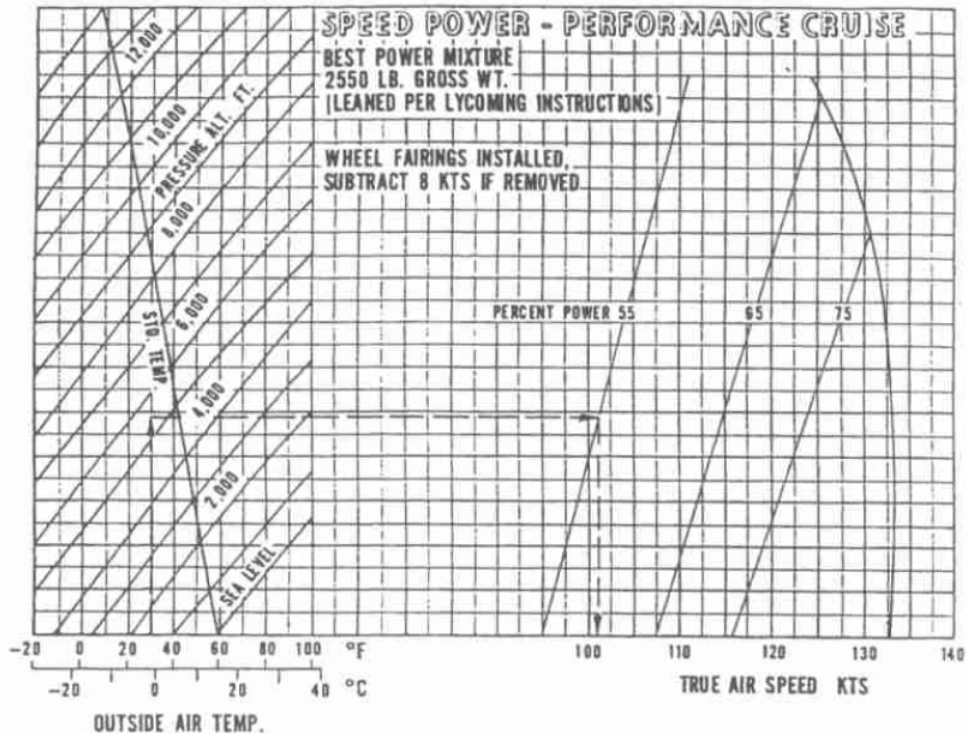
# PA-28-181



# PA-28-181

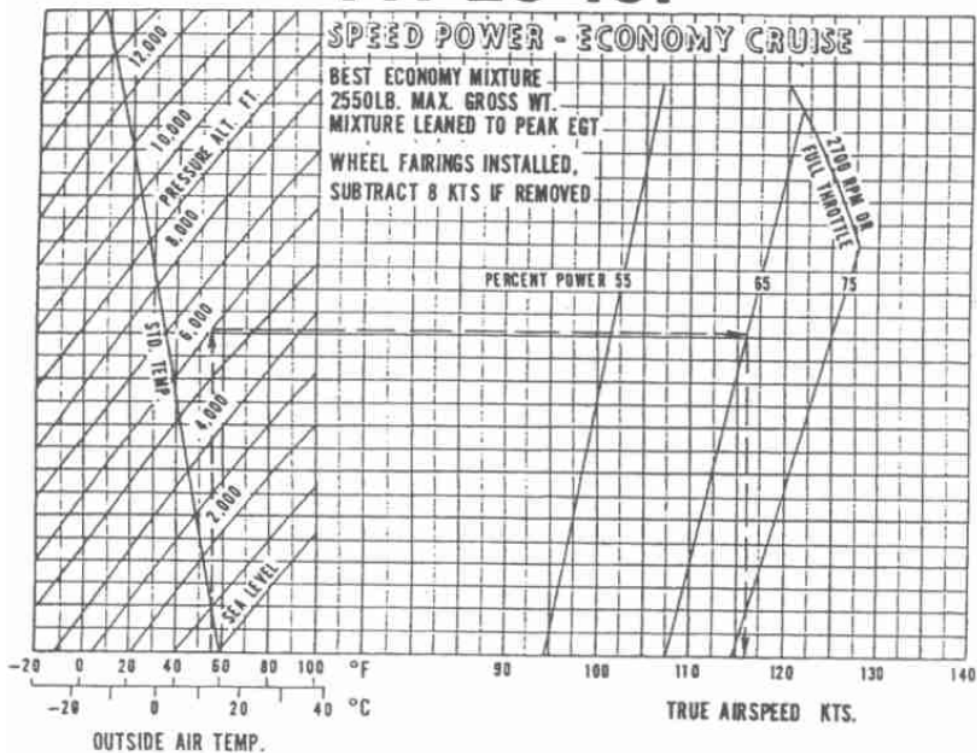


# PA-28-181





# PA-28-181



# PA-28-181

